



Barts Health
NHS Trust



Barts BioResource

February 2018 Newsletter



Information

Bart's BioResource (BBR) news and views is a monthly newsletter that showcases our research recruitment for the different layers of consent (data, biosamples, tissue donation \pm future contact) and our key locations where consenting currently takes place.

The *BBR* newsletter shares information on new sub project developments and also provides patient and staff feedbacks relevant to our research project.

The *BBR* can often support disease specific research projects and questions. If you would like to find out more or have any comments on this newsletter, please contact maudrian.burton@bartshealth.nhs.uk

Access to the project can be obtained by completing the below link

<https://redcaphh.c-cloudservices.net/surveys/?s=yzBAF4pBrY>



Patient Feedback



Barts Health
NHS Trust

“ I feel happy that I can support a research study, I have wanted to participate in research but did not want to travel back to the hospital. Being able to opt out of future contact was ideal.”

Anonymous participant

“ I will have been happy to join the research study if I was offered an incentive.”

Anonymous patient



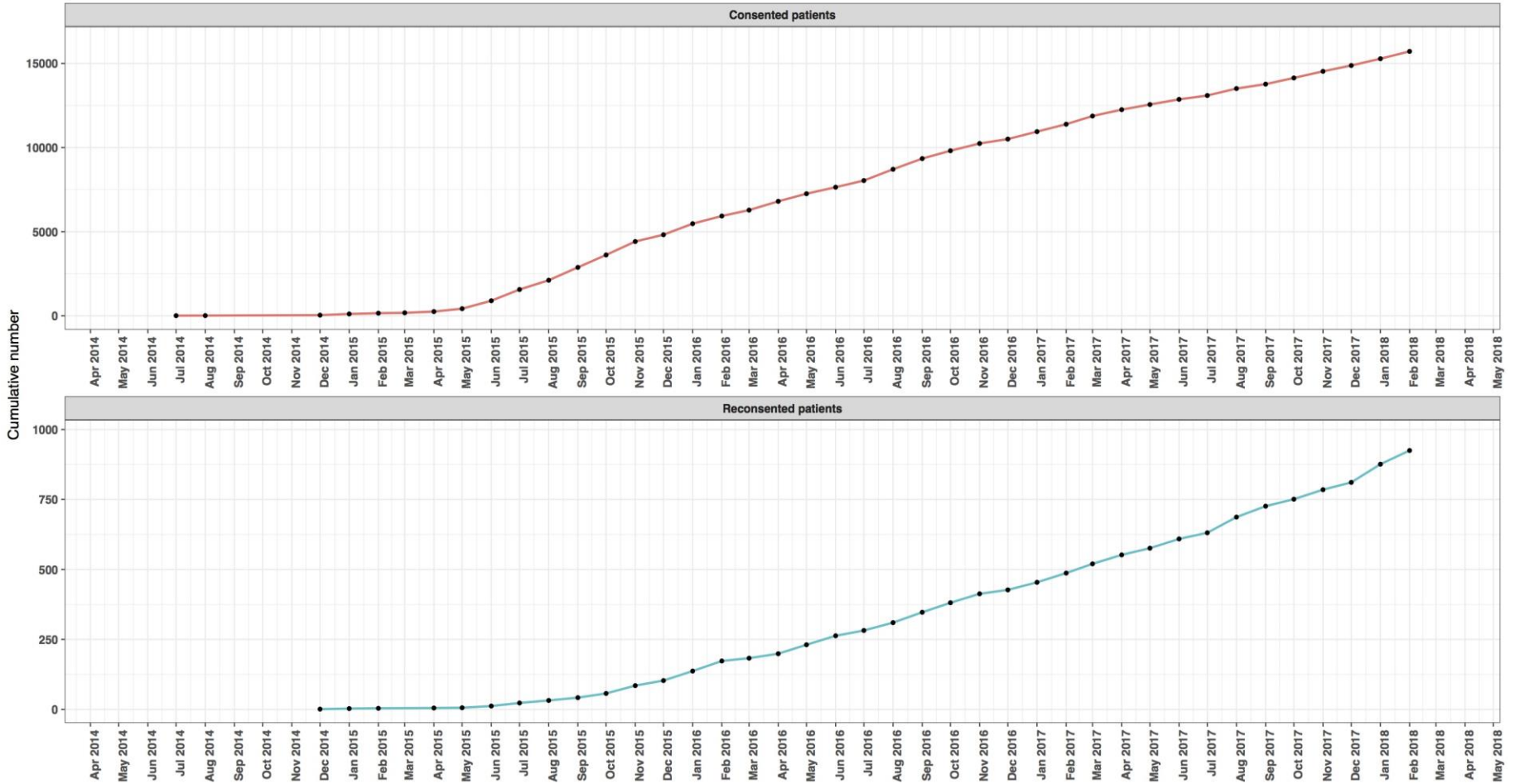
Cumulative Recruitment



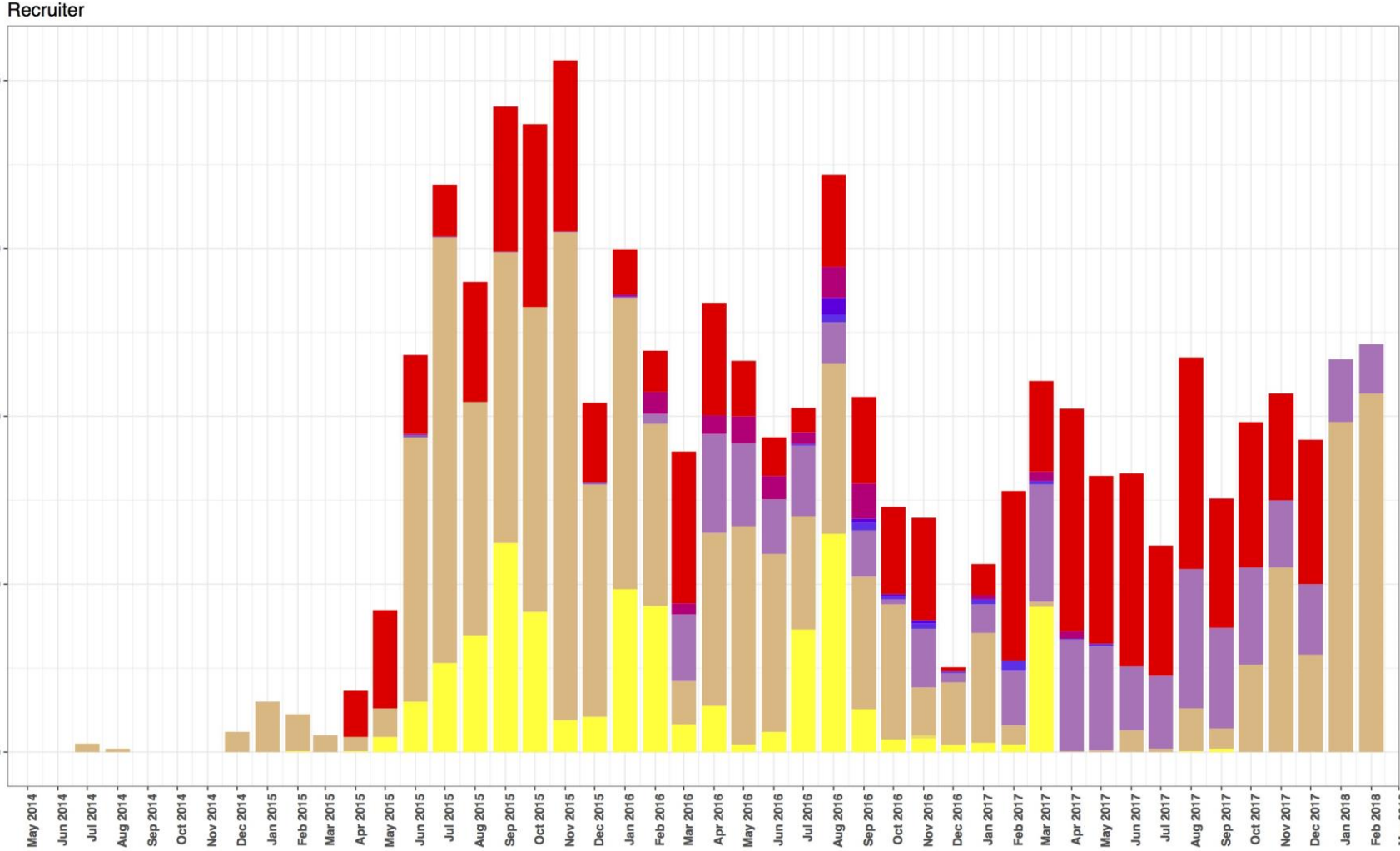
Barts Health

Barts BioResource cumulative recruitment

Total consent N = 16368; Total re-consent N = 985



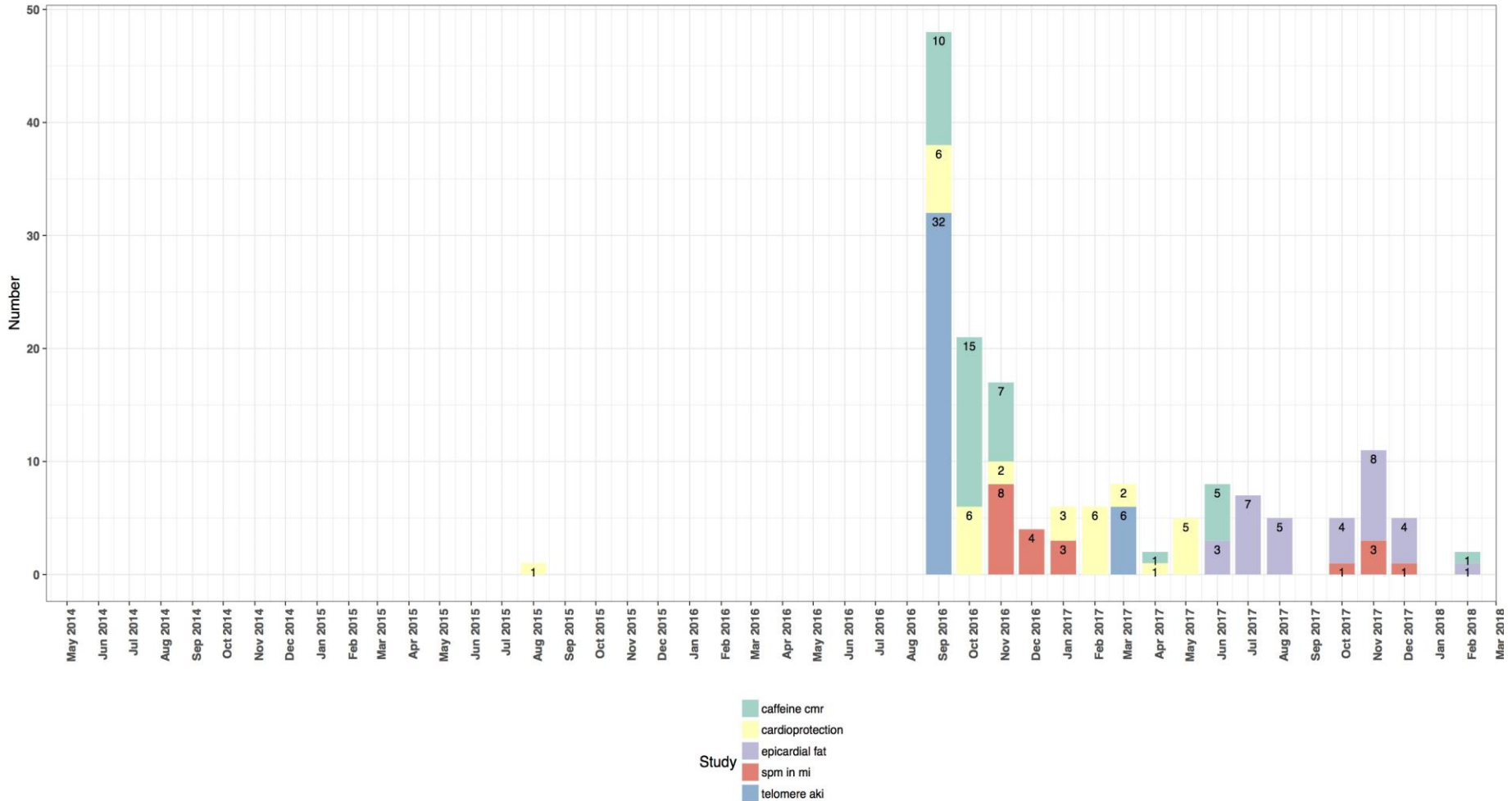
Proportion of recruitment by researcher



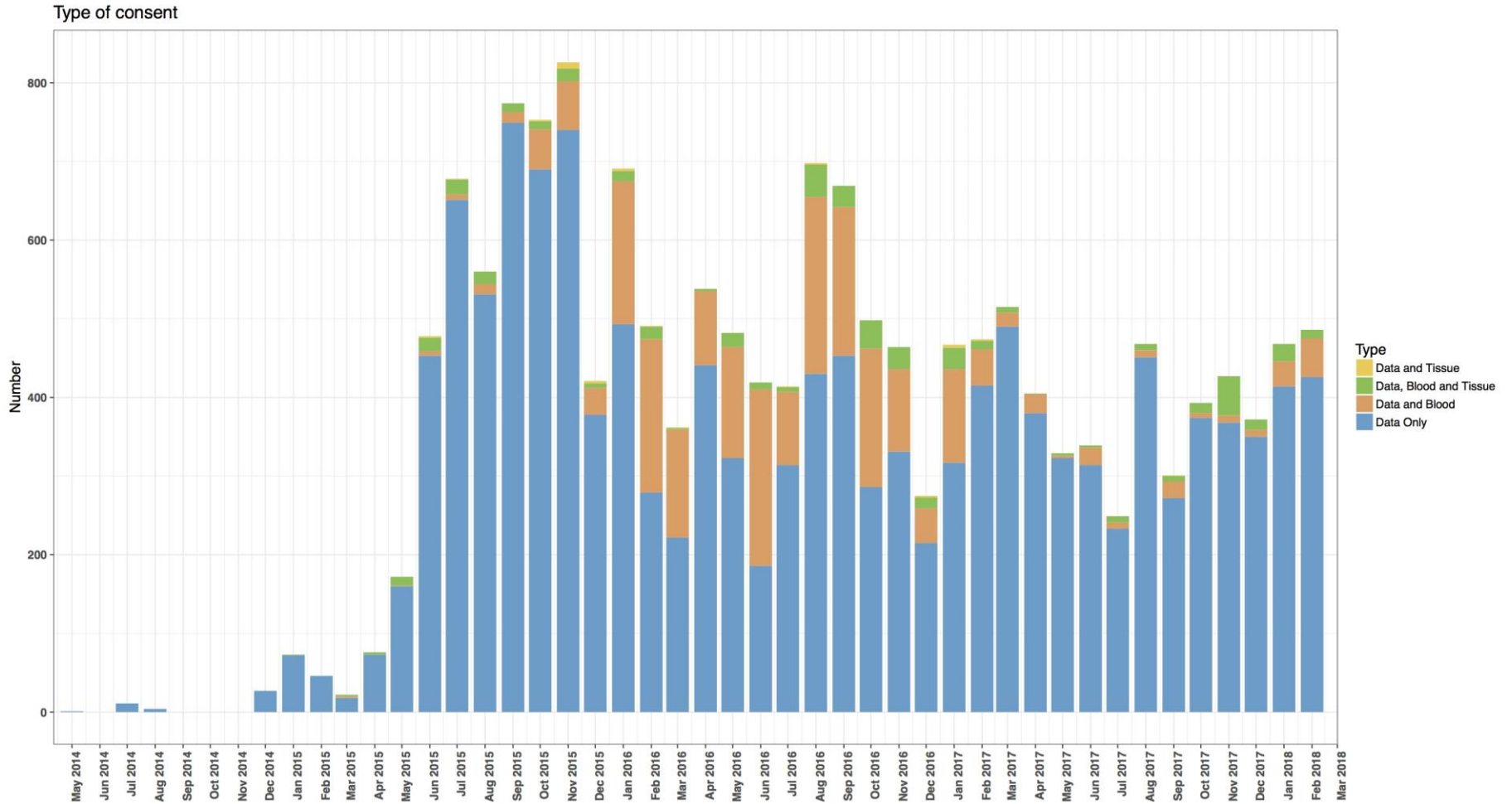
- Consented by
- Asfia Haider
 - Damian Balmforth
 - Giulia Benedetti
 - John McGowan
 - Malcolm Finlay
 - Nathan Dunton
 - Nay Aung
 - Other
 - Paul Scully
 - Saira Mohammed

Recruitment to sub-studies

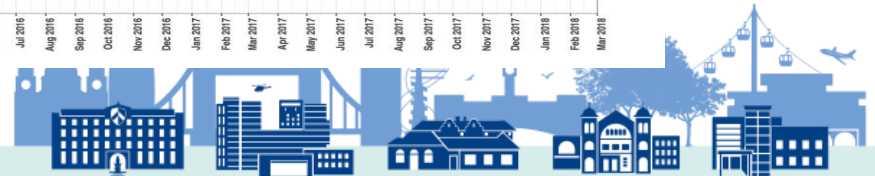
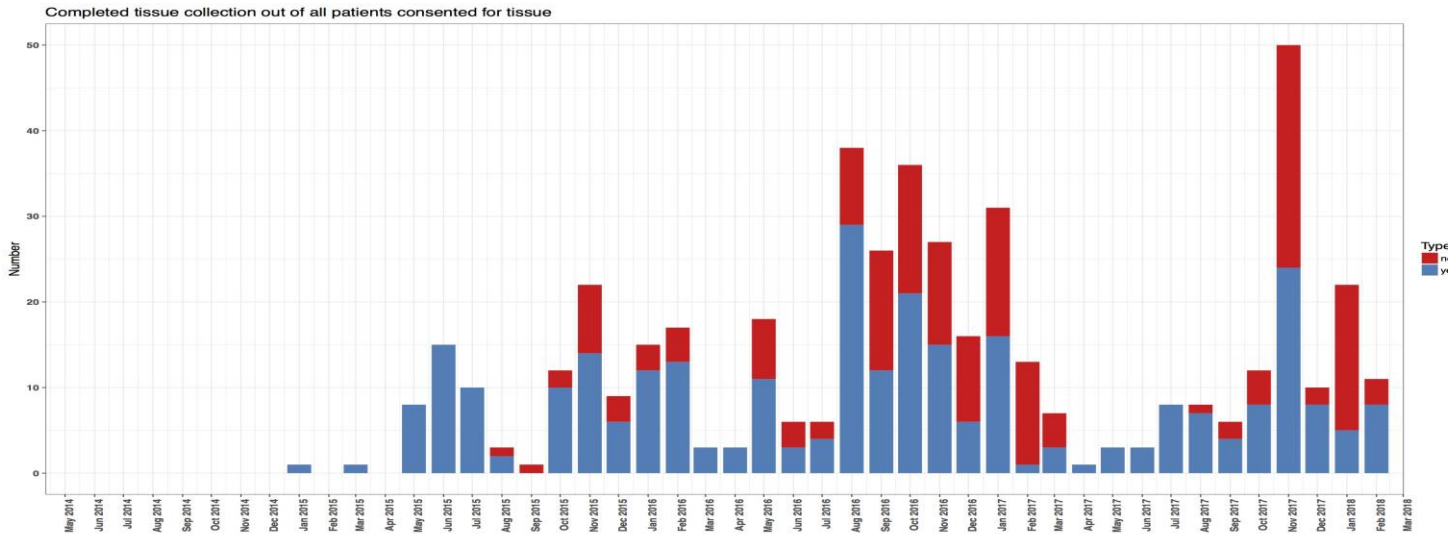
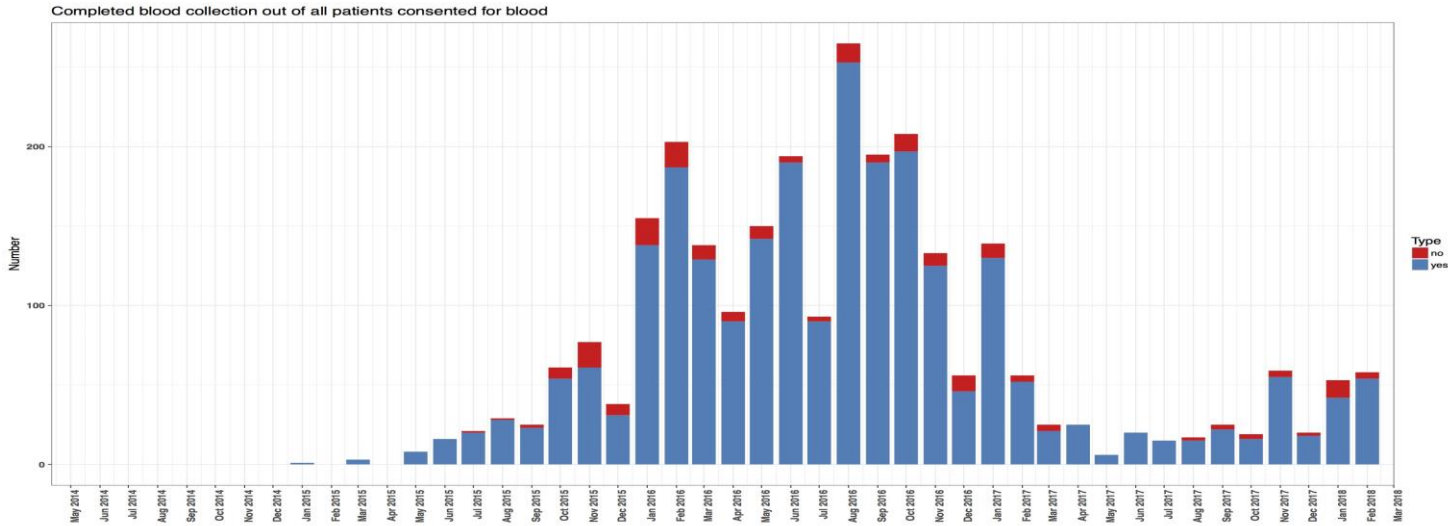
Number of patients recruited into studies



Recruitment to each stratum

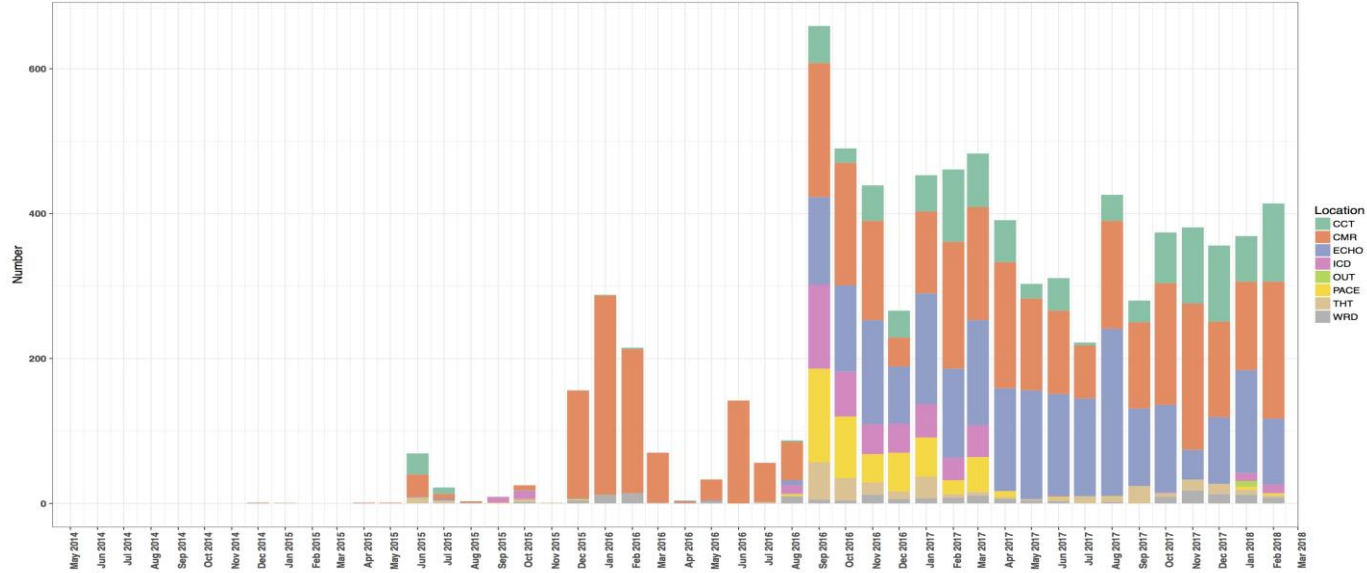


Proportion of biosamples collected

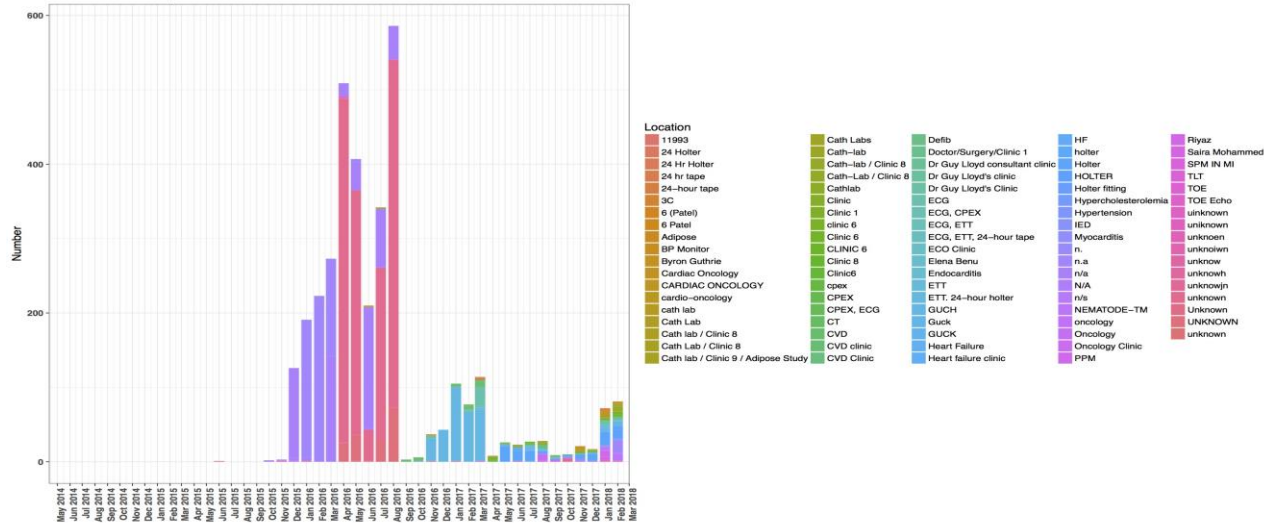


Location of patient recruitment

Major locations of patient



Other locations of patient

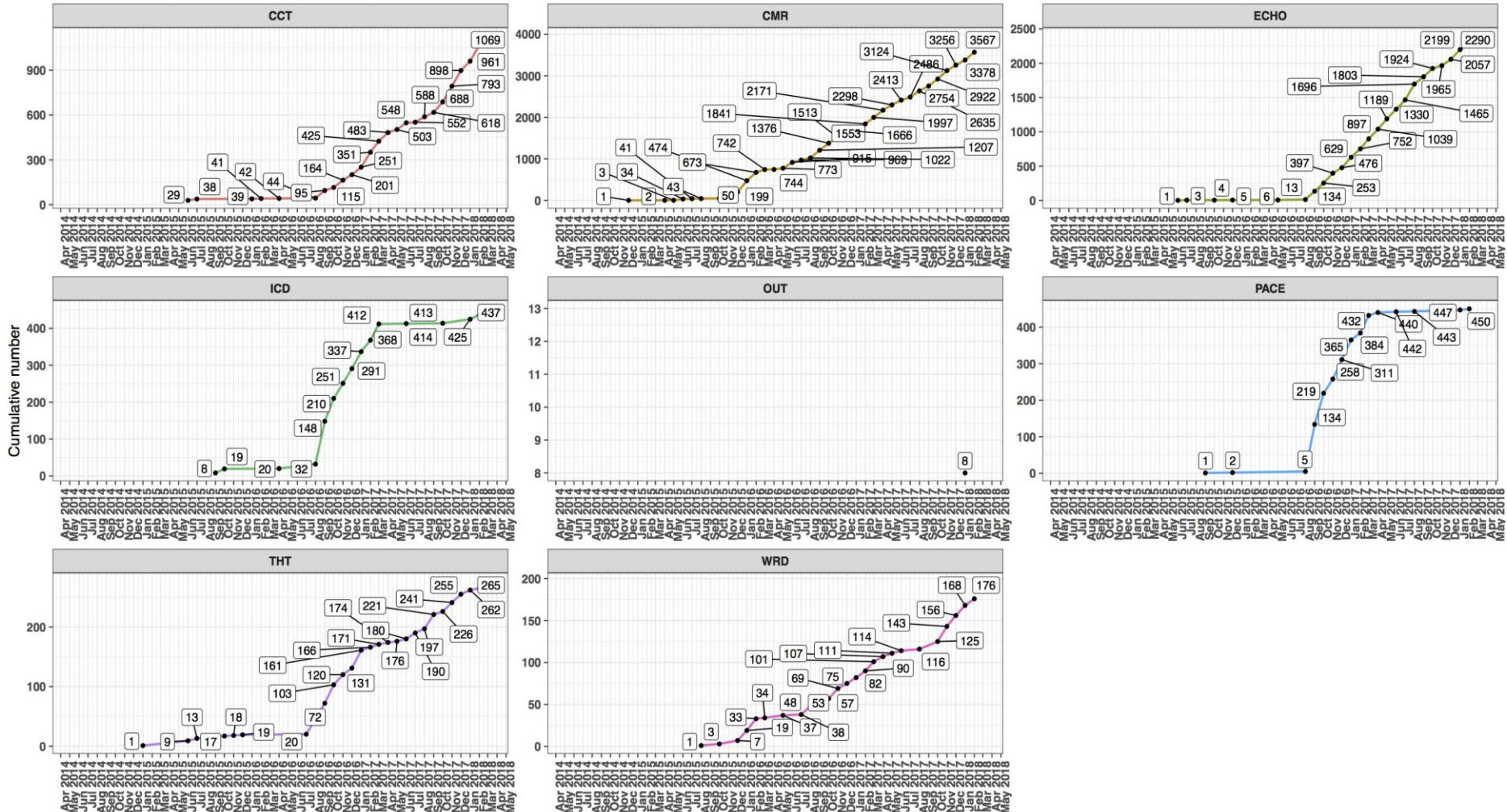


Trends in recruitment locations

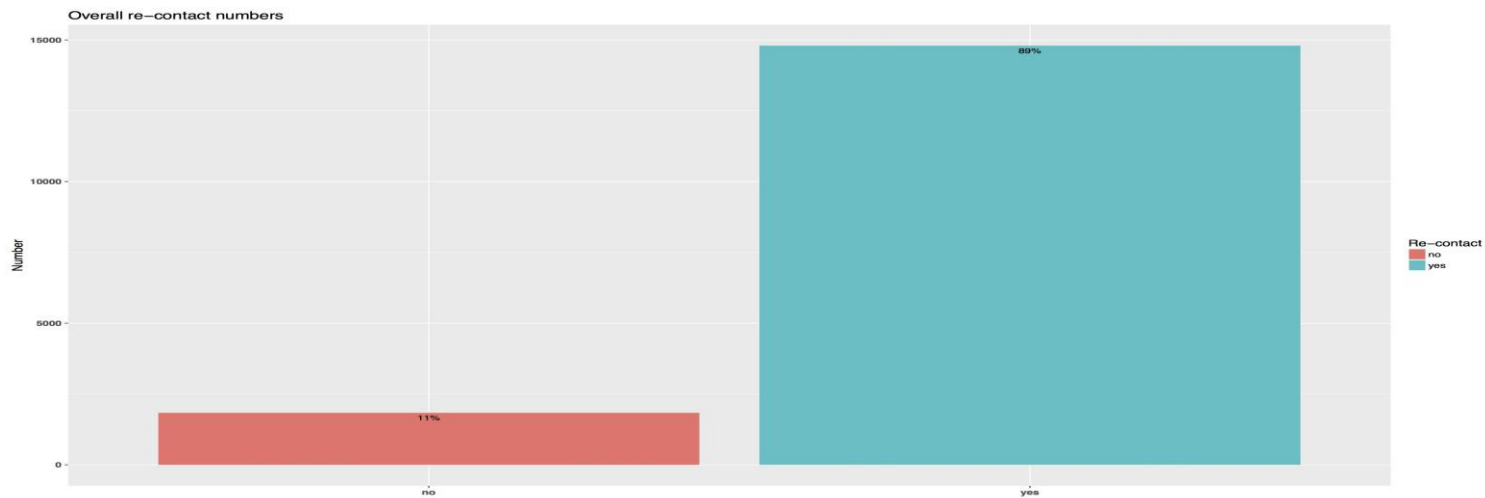
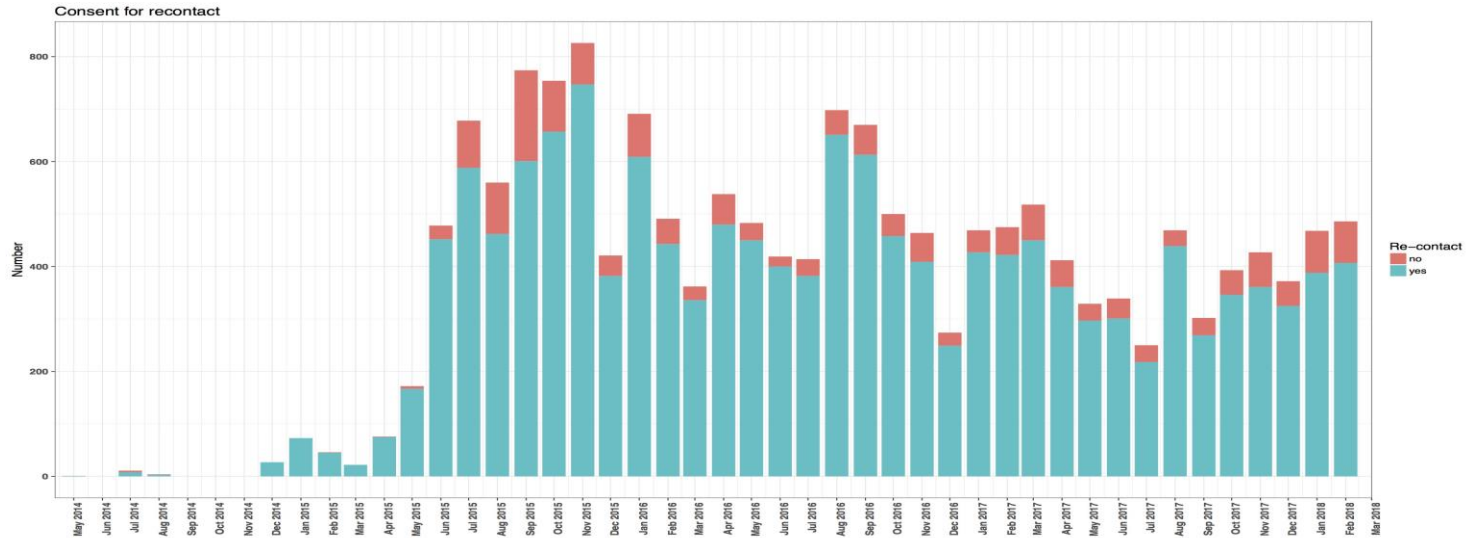


Barts Health
NHS Trust

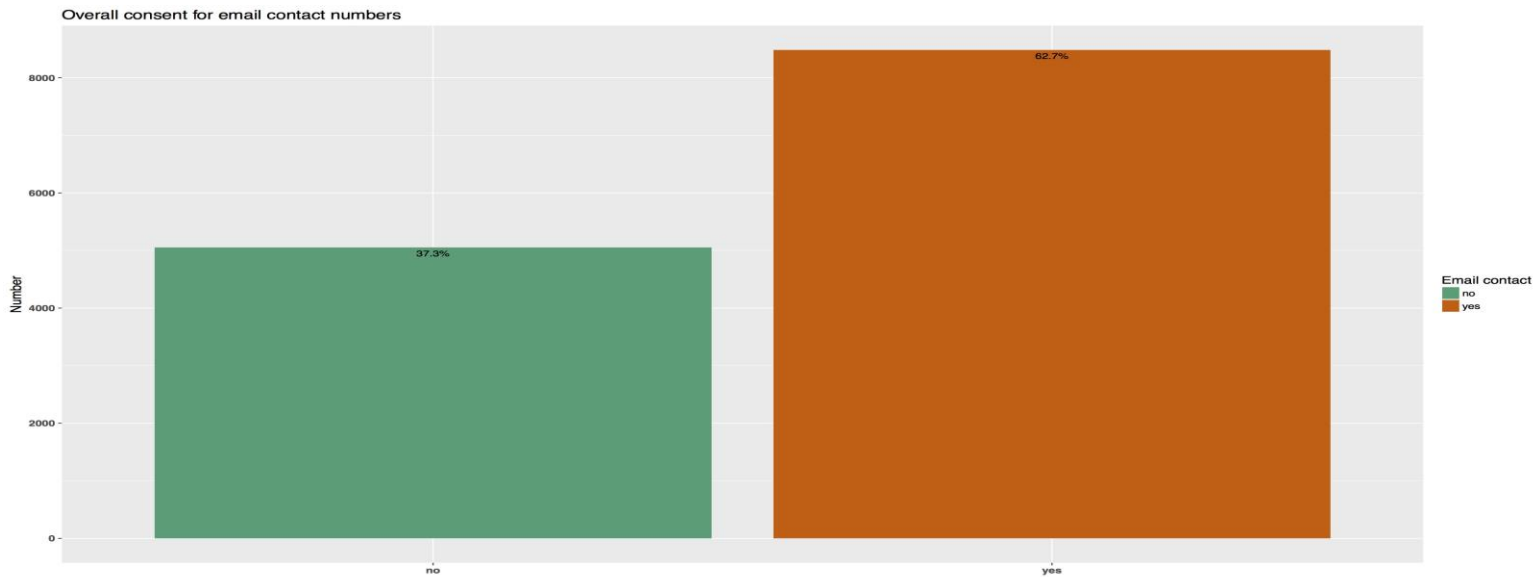
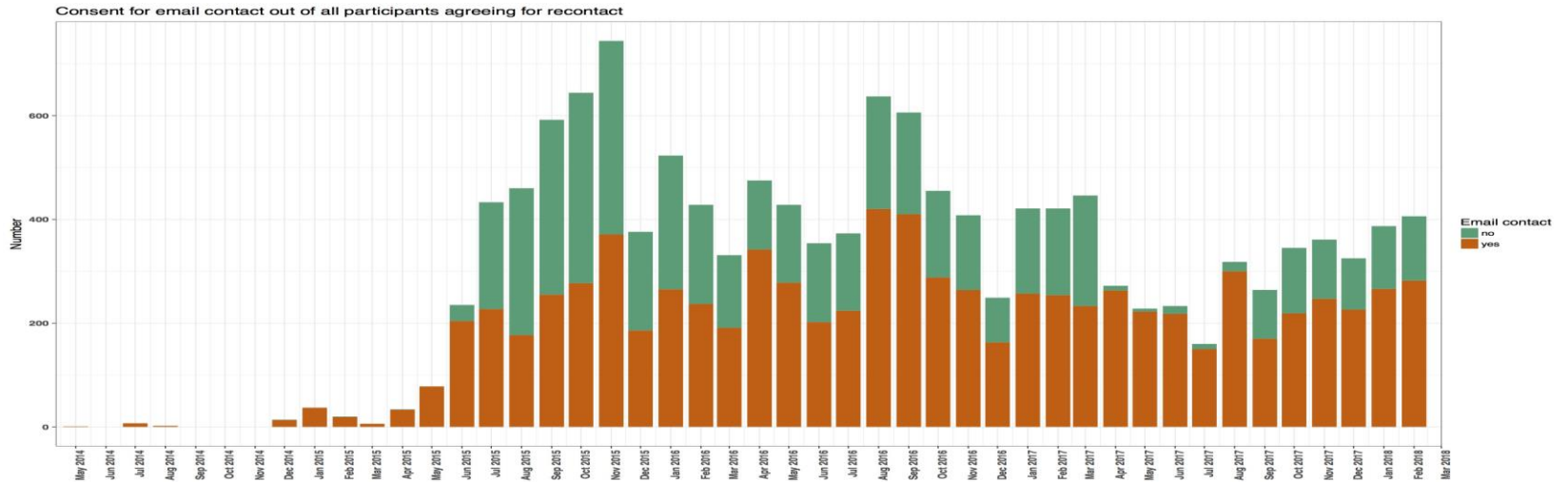
Recruitment trend of locations of consent



Proportion of patients consenting to future contact



Proportion of patients consenting to future contact via email

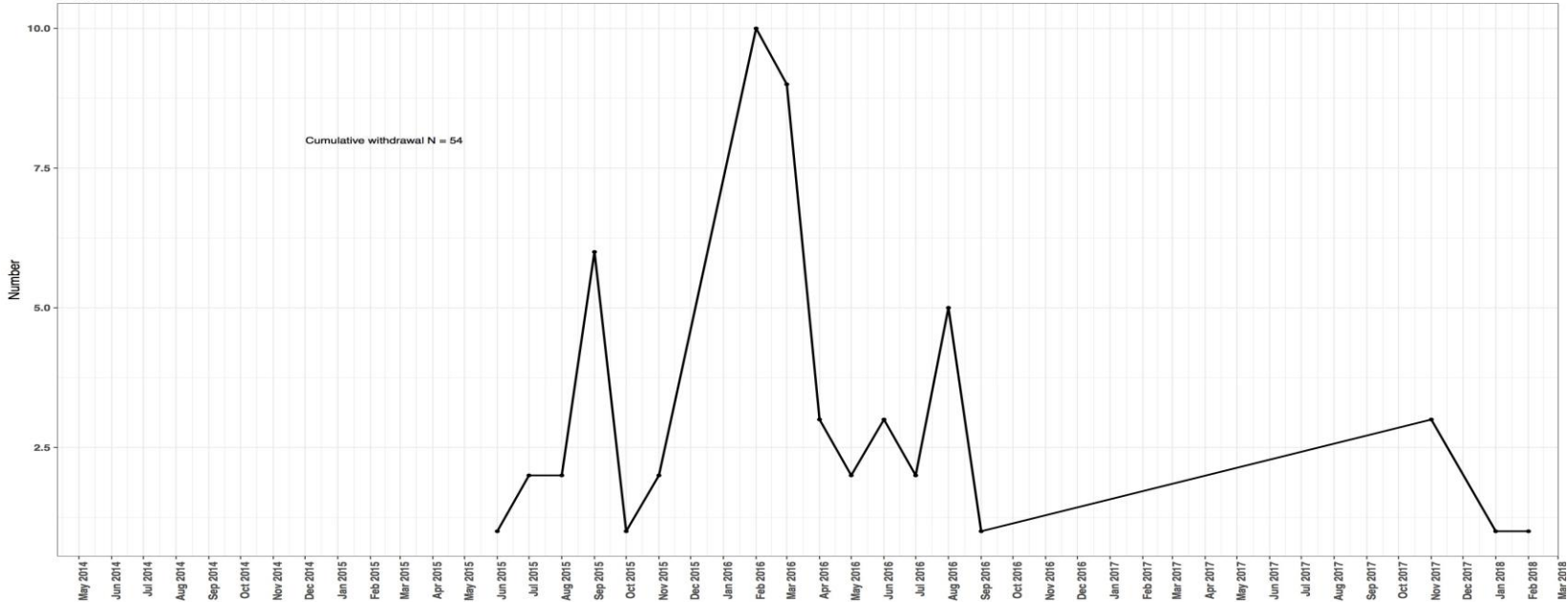


Patient Withdrawal from the Barts BioResource

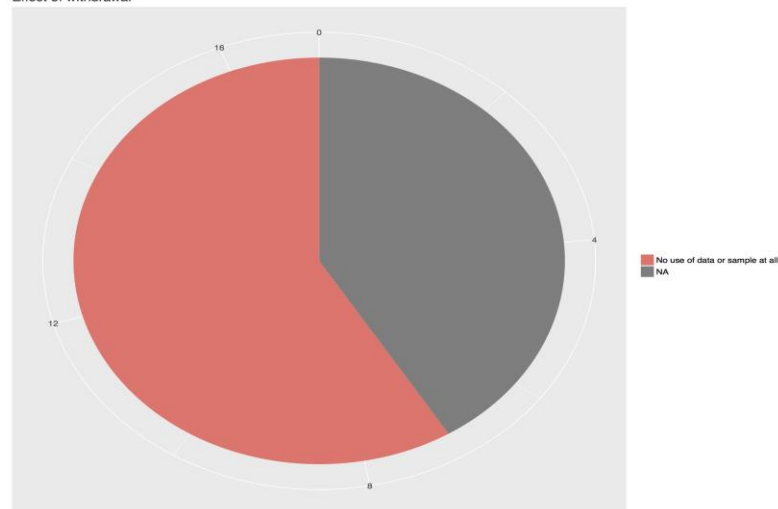


Barts Health
NHS Trust

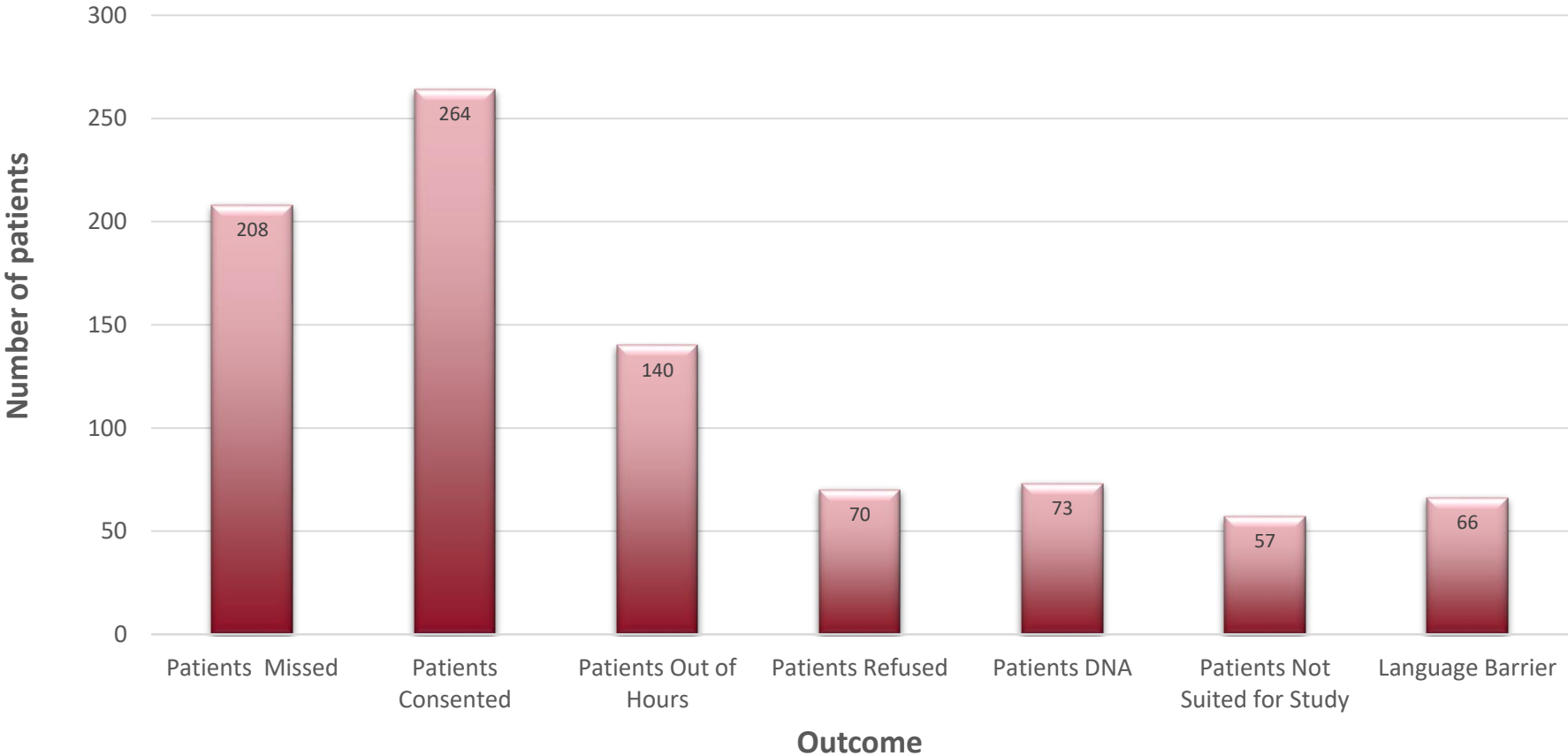
Patients withdrawn from Barts BioResource



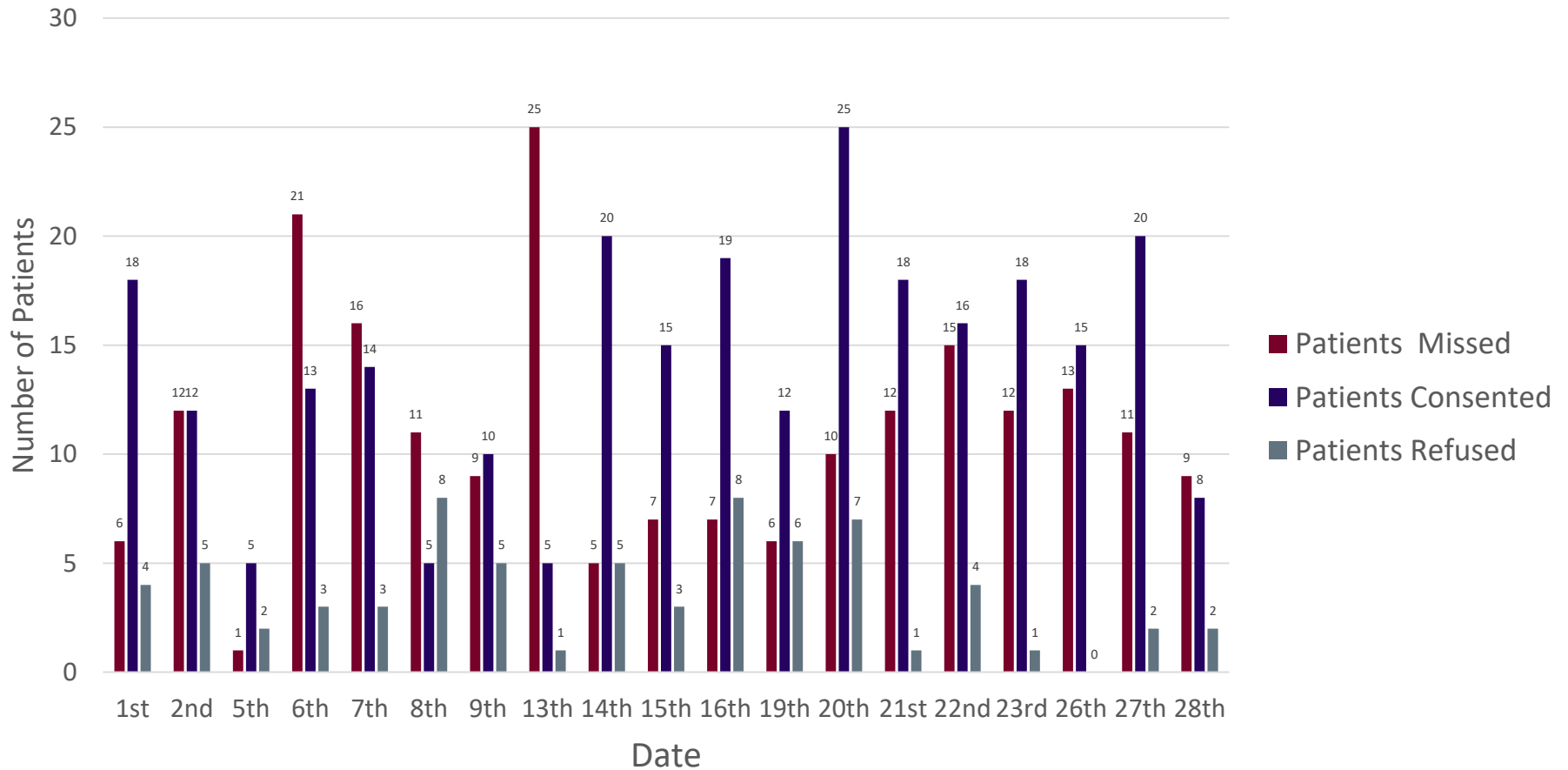
Effect of withdrawal



Overview of February patients in the Cardiac Imaging Department



Proportion of patients missed, consented or refused during February in the Cardiac Imaging Department



Number of patients consented versus patients refusing during February in the Cardiac Imaging Department



Barts Health
NHS Trust

