



Barts Health
NHS Trust



Barts Resource

January 2019 Newsletter



Information

Bart's BioResource (BBR) news and views is a monthly newsletter that showcases our research recruitment for the different layers of consent (data, biosamples, tissue donation \pm future contact) and our key locations where consenting currently takes place.

The *BBR* newsletter shares information on new sub project developments and also provides patient and staff feedbacks relevant to our research project.

The *BBR* can often support disease specific research projects and questions. If you would like to find out more or have any comments on this newsletter, please contact maudrian.burton@bartshealth.nhs.uk

Access to the project can be obtained by completing the below link

<https://redcaphh.c-cloudservices.net/surveys/?s=yzBAF4pBrY>



Patient Feedback

“If it can help research into treating and preventing diseases of the heart, I am happy to consent”

Anonymous Patient

“ This sounds like a great idea. I would like to participate ”

Anonymous Patient

“ I have reservations with taking part in research. Can I decide later? ”

Anonymous Patient



Staff Feedback

“I think the Barts BioResource is a great idea for research”

Anonymous staff

“The BBR team have been very helpful in preparing patients for their scan”

Anonymous staff

“How can we get involved?”

Anonymous staff

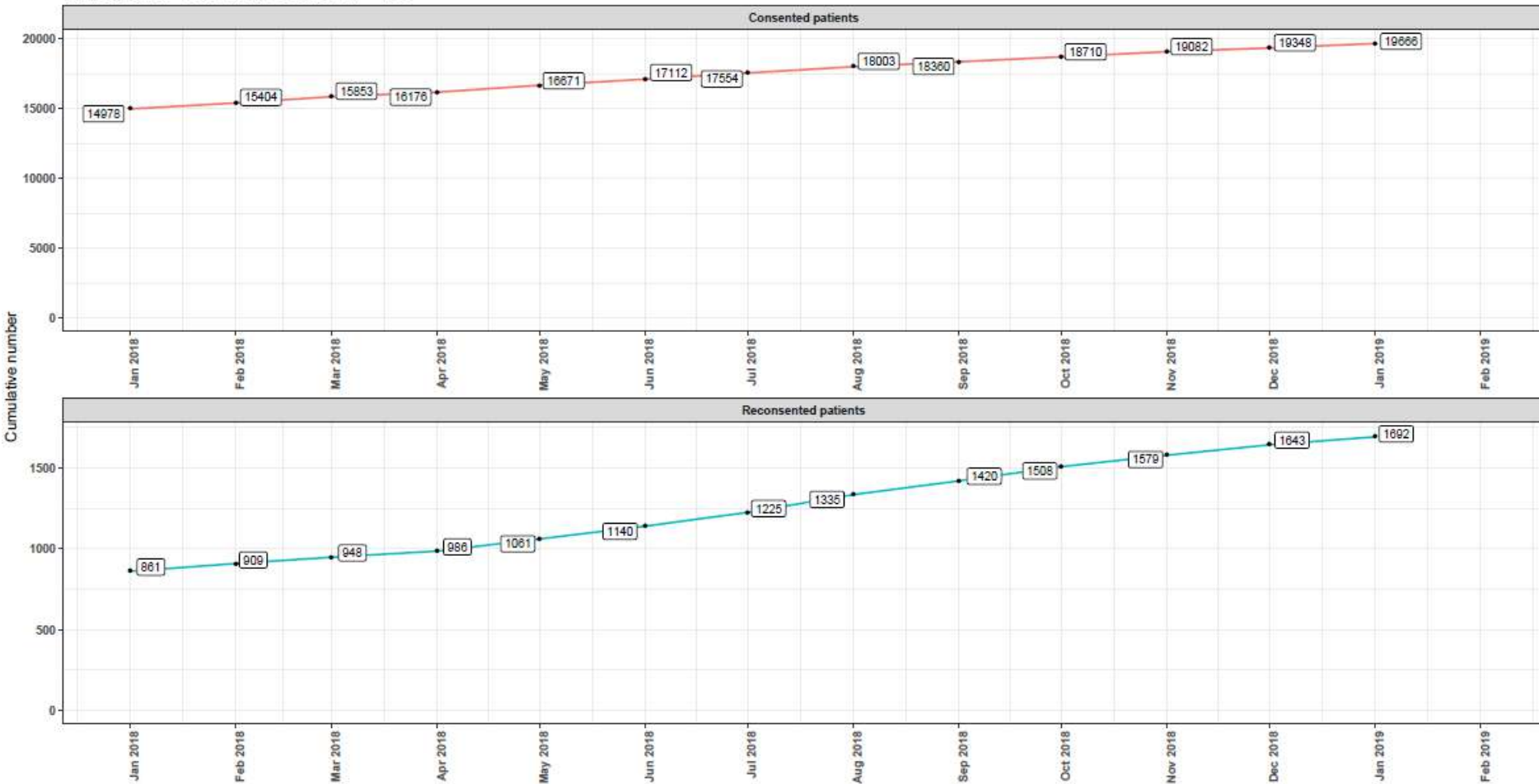


Cumulative Recruitment



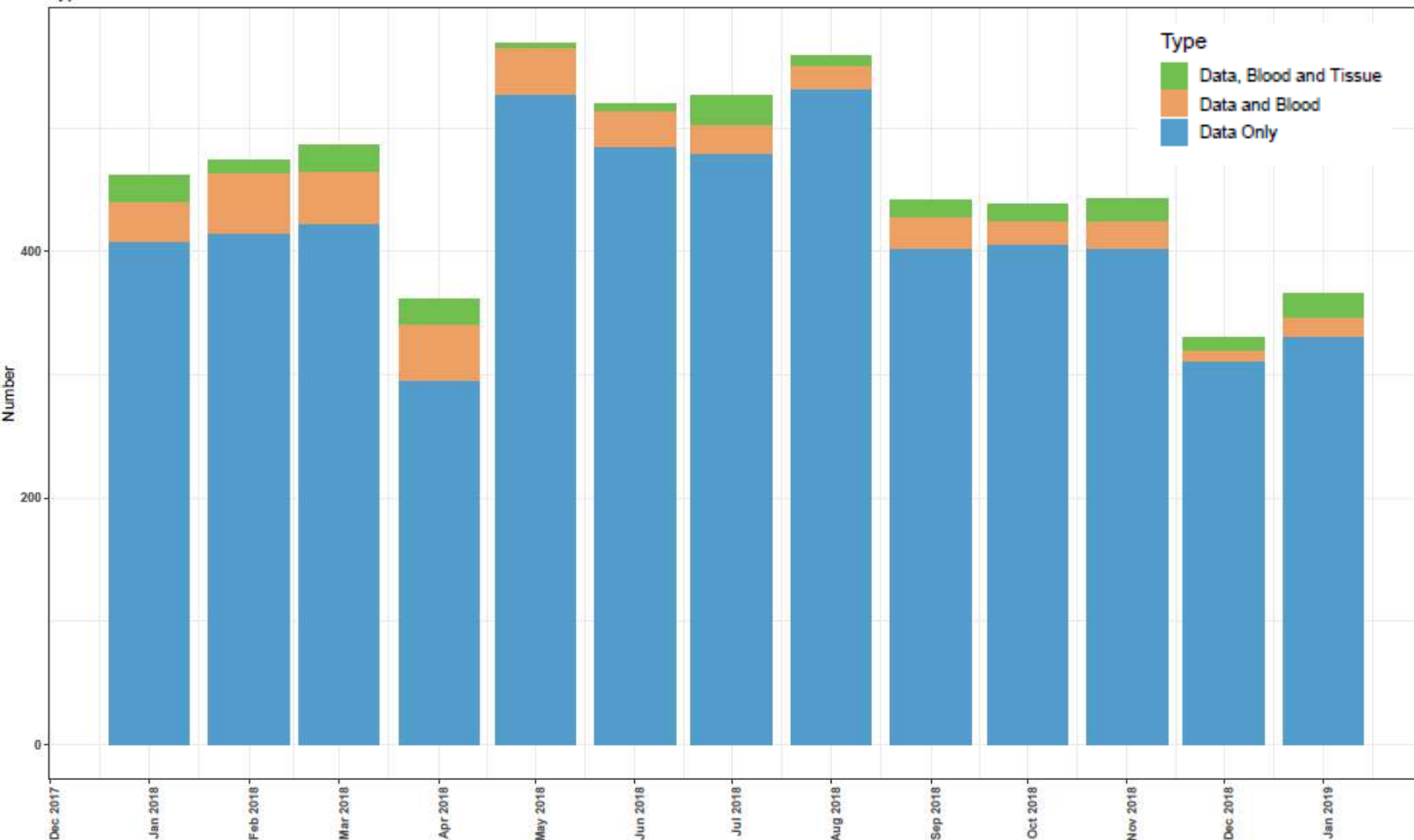
Barts Health
NHS Trust

Barts BioResource cumulative recruitment
Total consent N = 19704; Total re-consent N = 1700



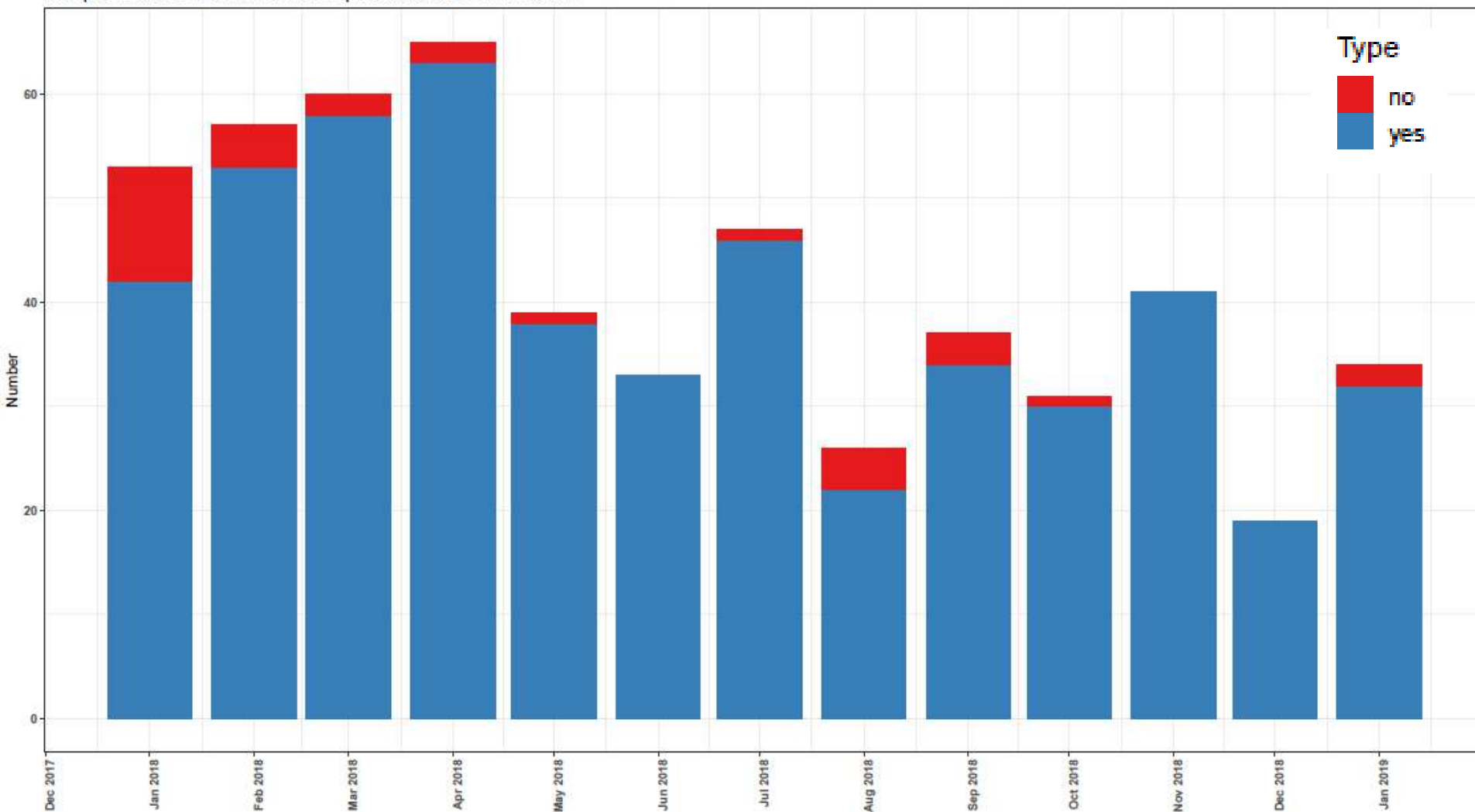
Recruitment to Respective Stratum

Type of consent



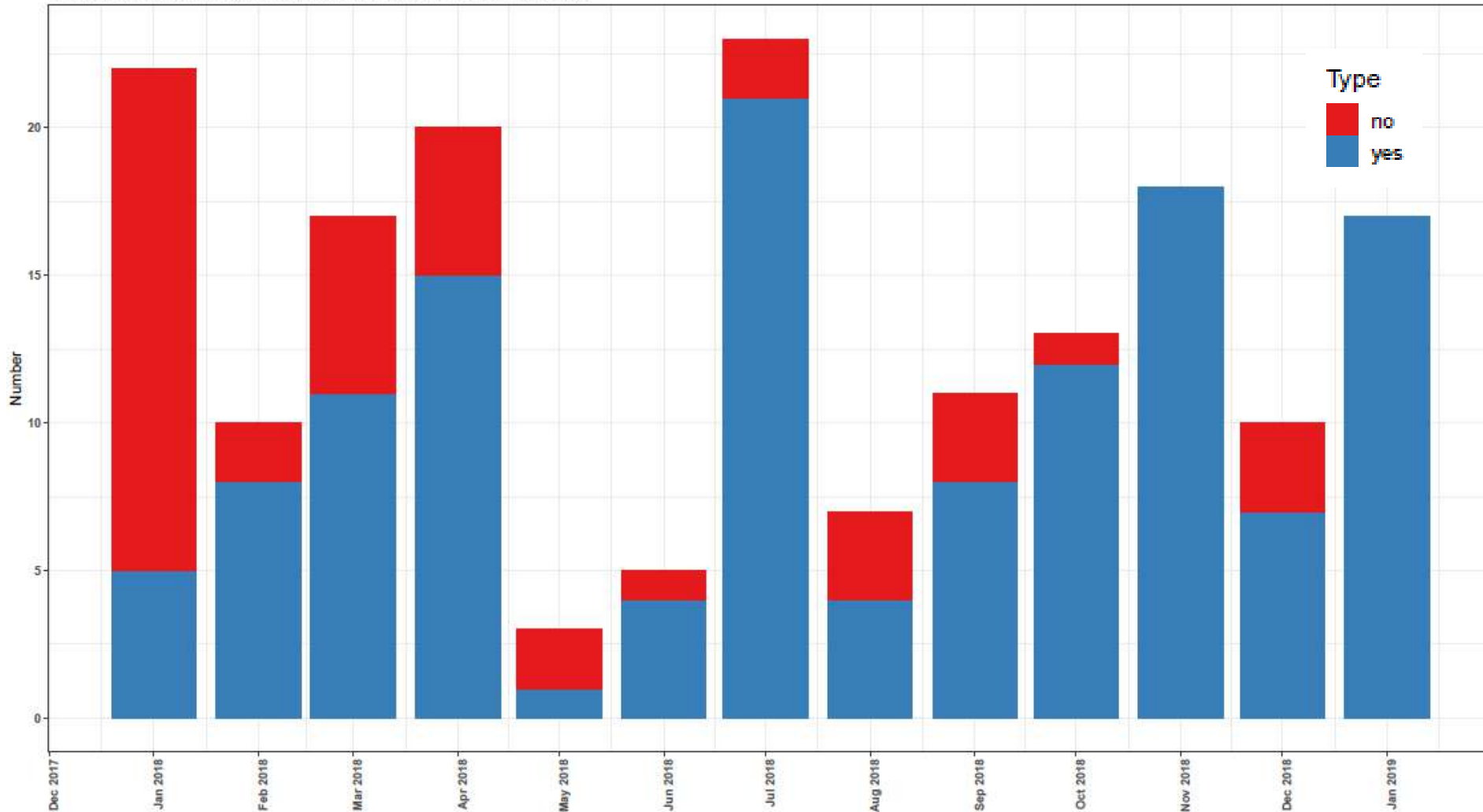
Proportion of Blood Sample Collection

Completed blood collection out of all patients consented for blood



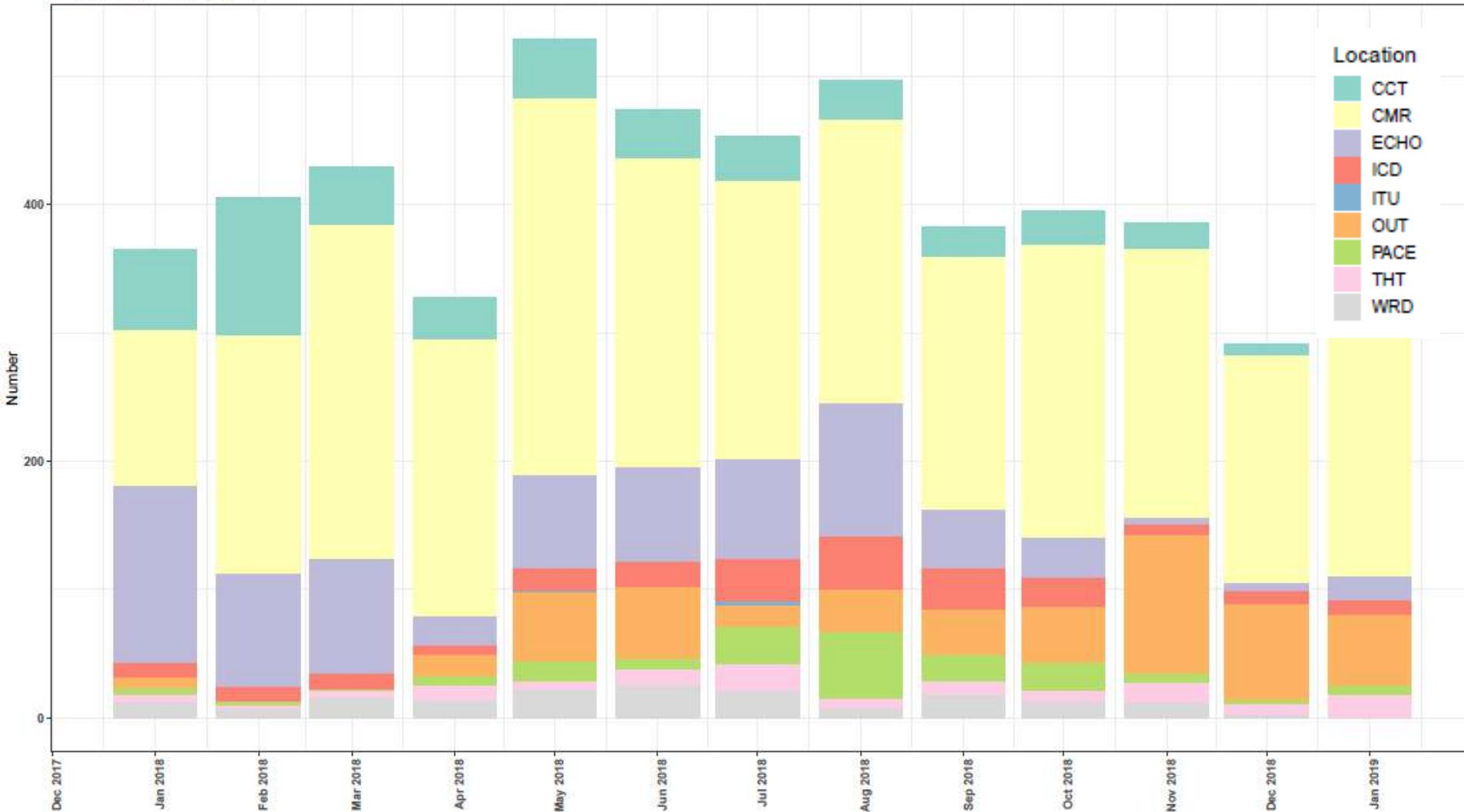
Proportion of Tissue Sample Collection

Completed tissue collection out of all patients consented for tissue



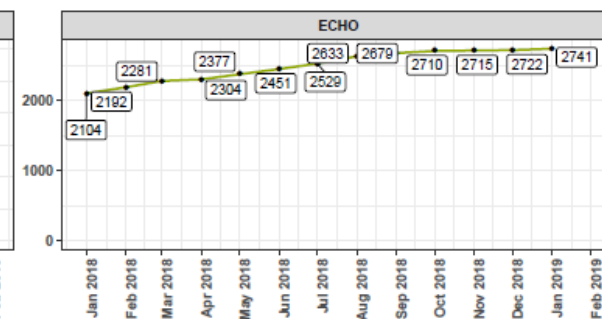
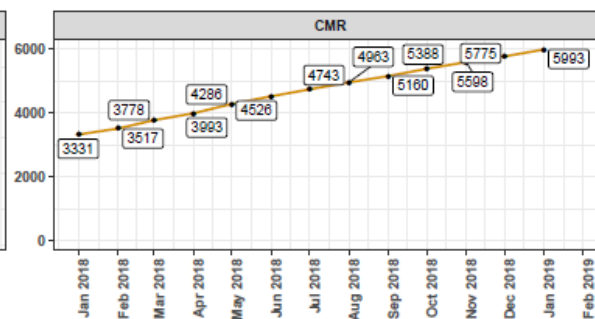
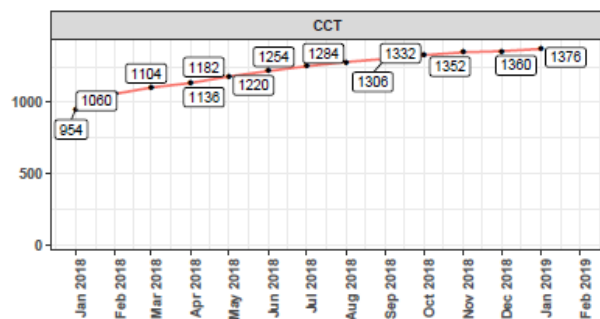
Location of Patient Recruitment

Major locations of patient

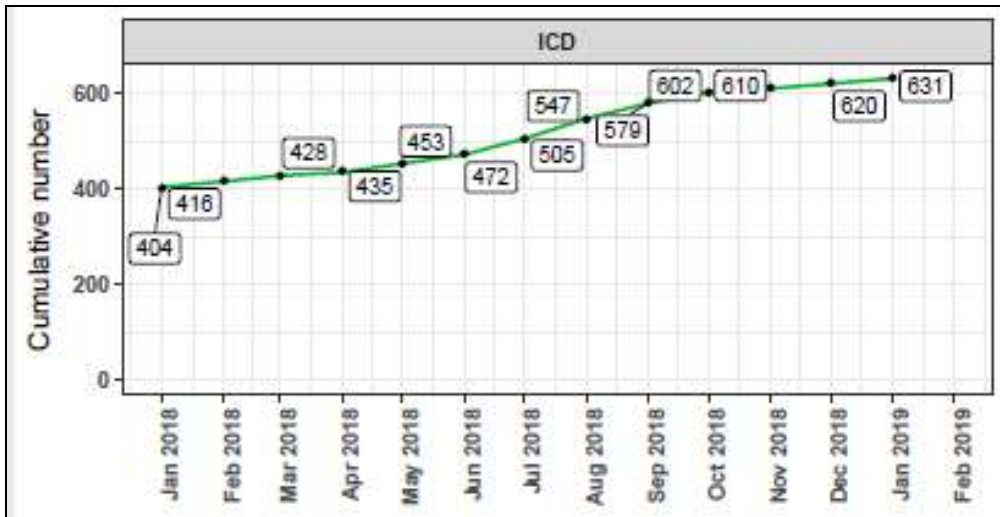


Trends in Recruitment locations

Recruitment trend of locations of consent

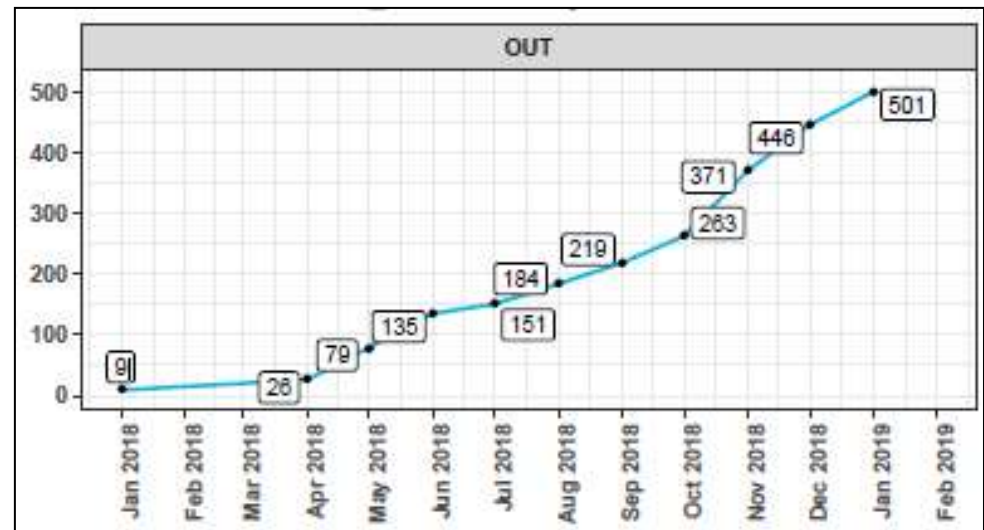


Trends in Recruitment locations

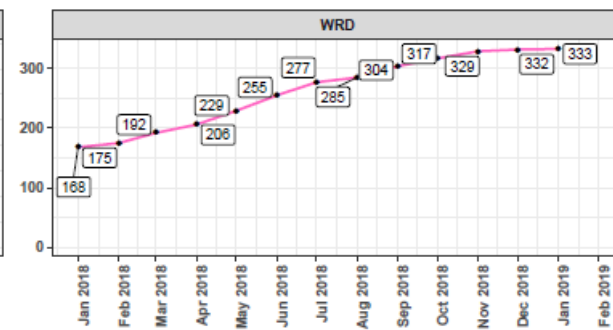
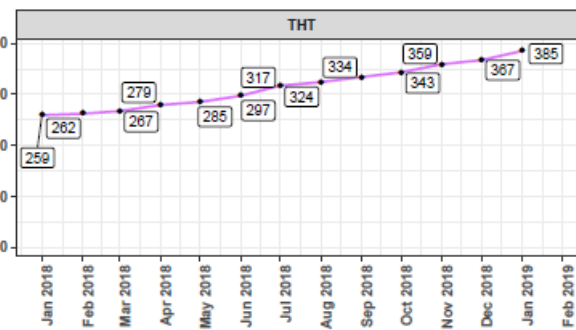
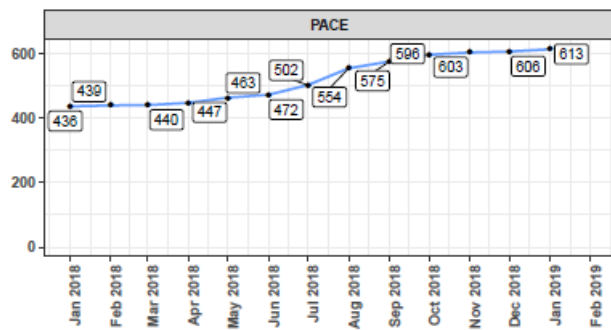


ICD figures: this is a proportion of patients that come to clinic 5 for ICD check ups

This is a proportion of patients that come to attend clinics such as: hypertension, hypercholesterolemia, myocarditis, cardiac oncology



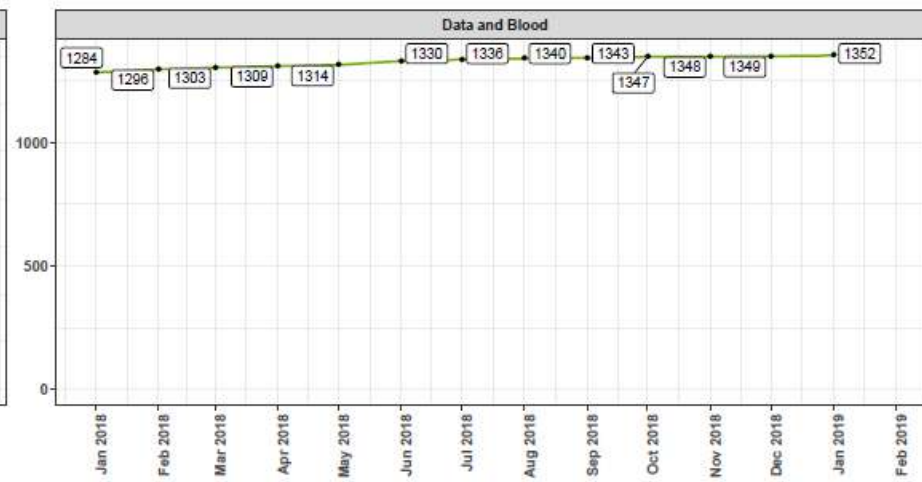
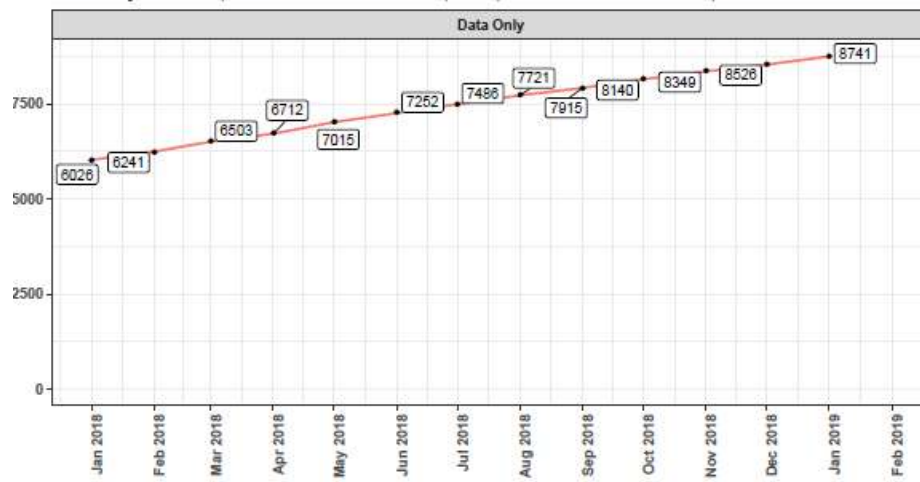
Trends in Recruitment locations



Cardiac MRI and Respective Stratum

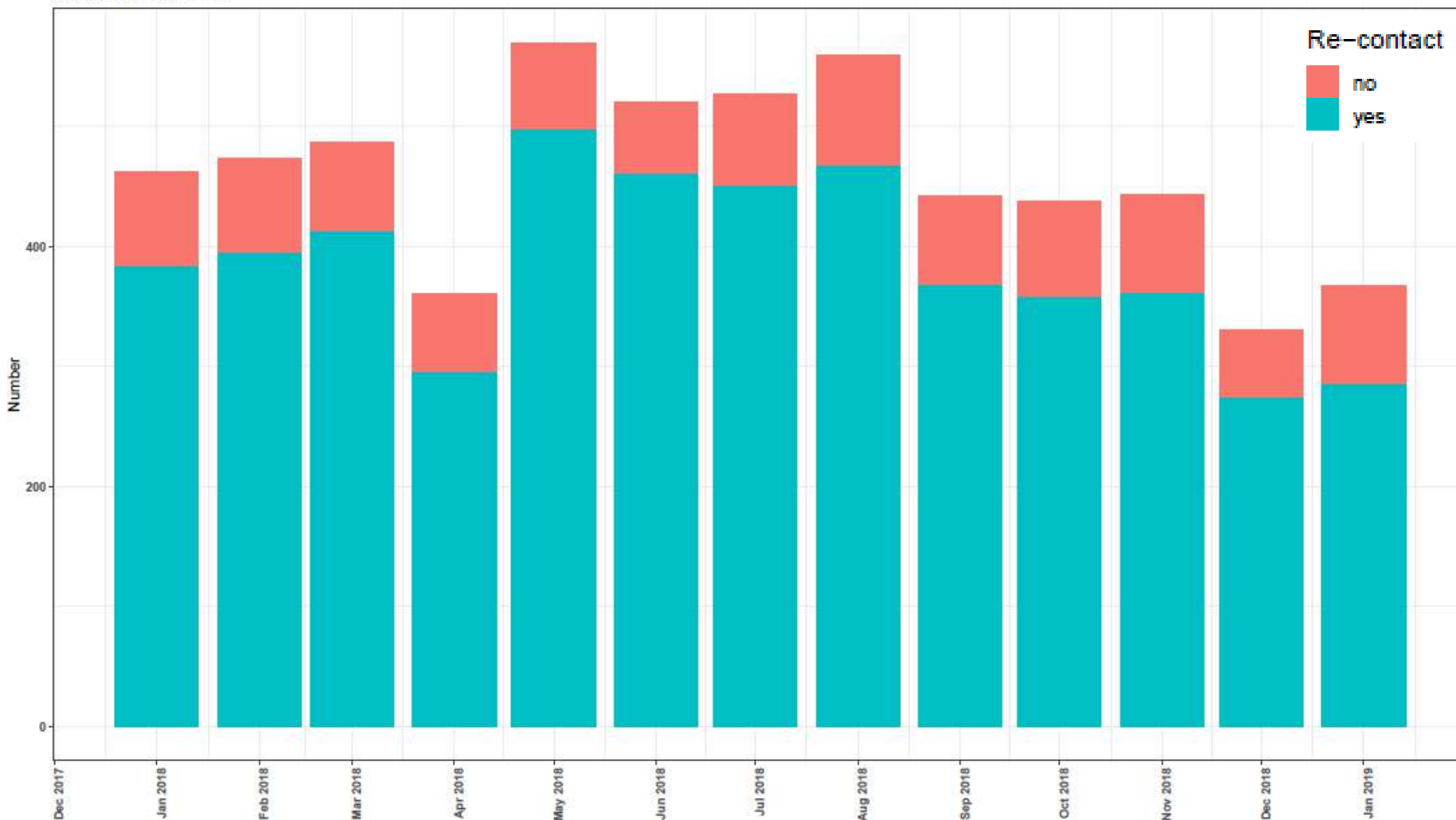
Recruitment trend of consent types for participants with CMR studies

'Data Only' N = 8764; 'Data and Blood' N = 1352; 'Data, Blood and Tissue' N = 73; 'Data and Tissue' N = 8



Trends in Consent to be Re-Contacted

Consent for recontact

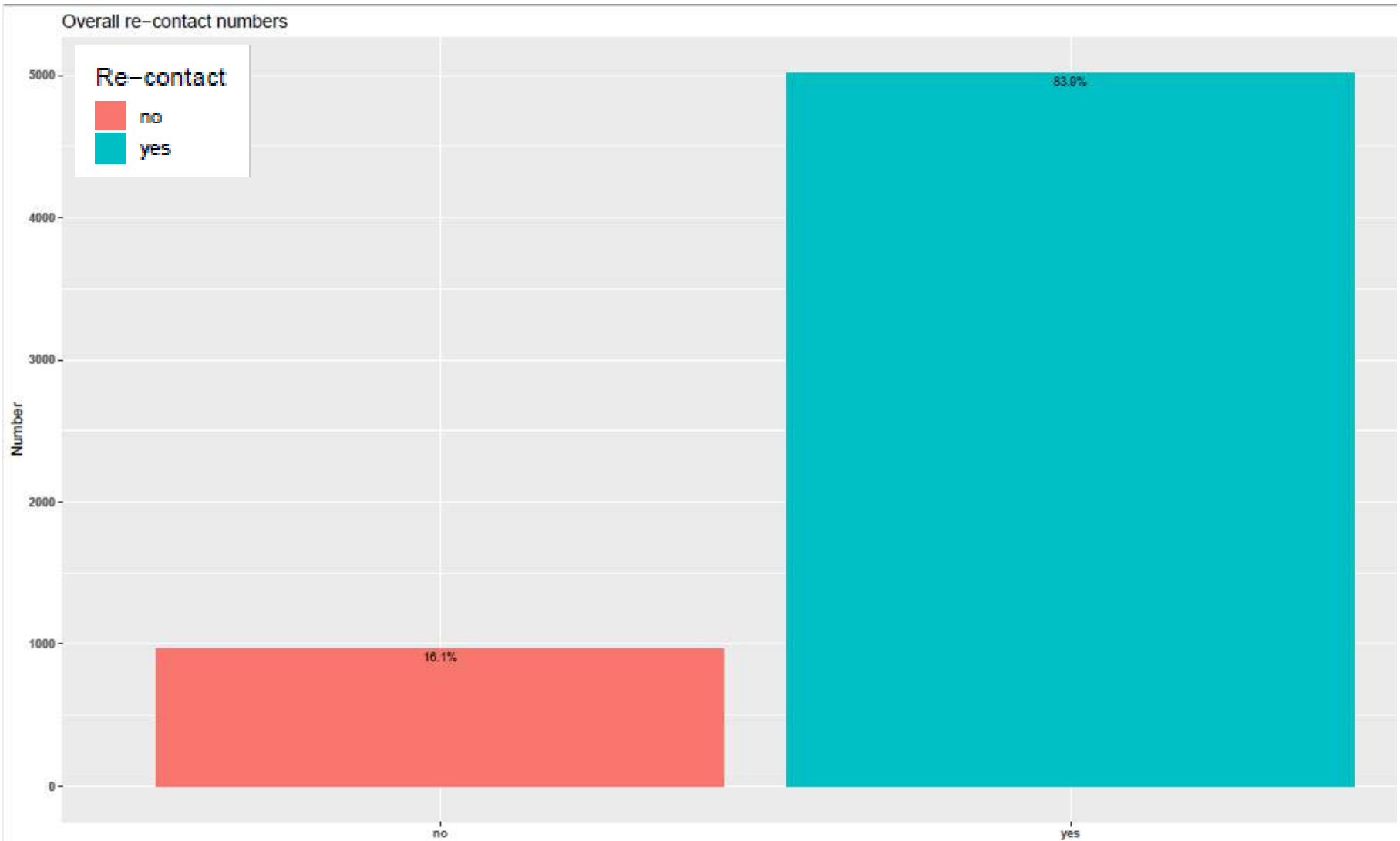


Proportion of Patients Consented for Re-Contact



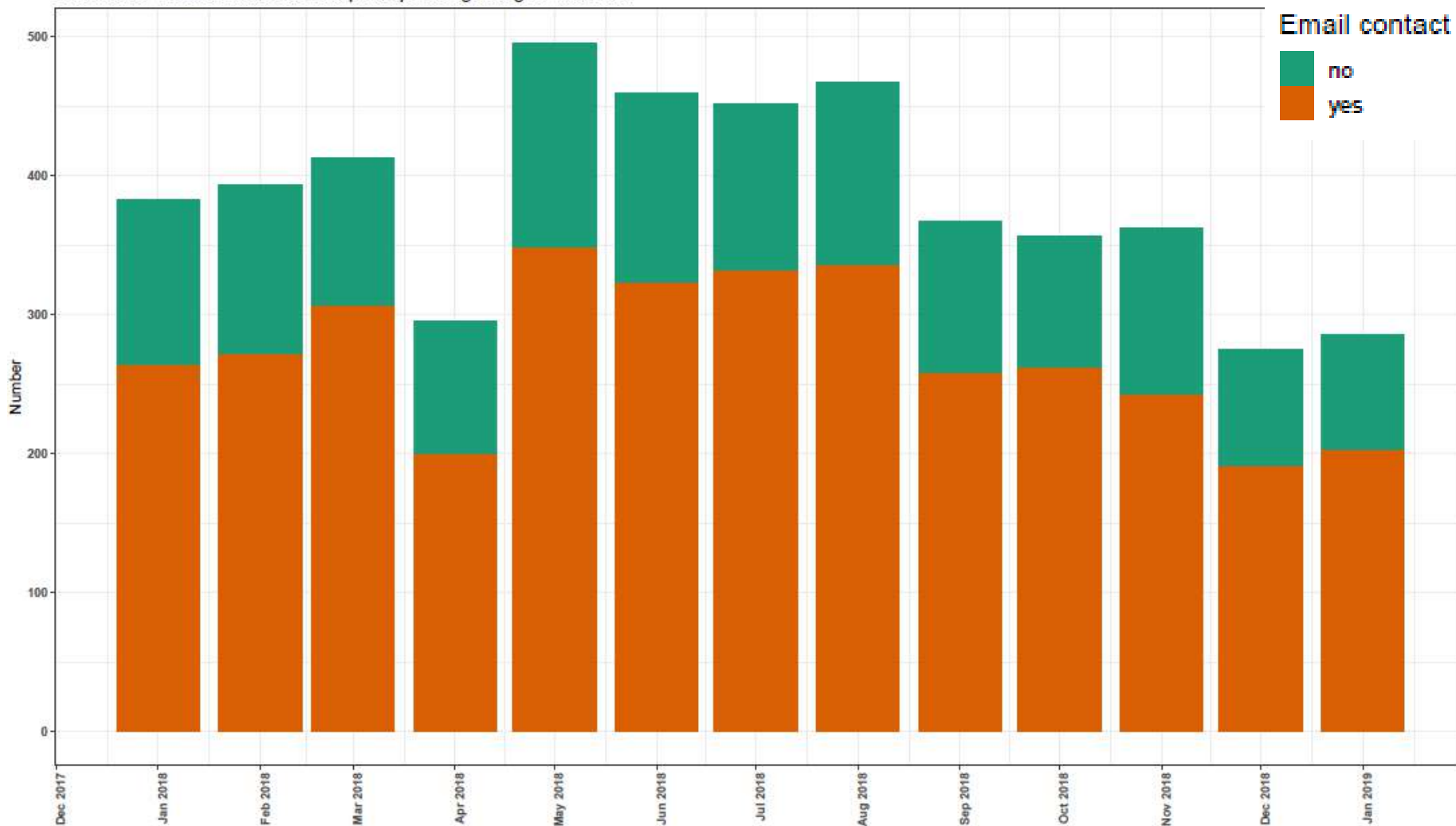
Barts Health

NHS Trust



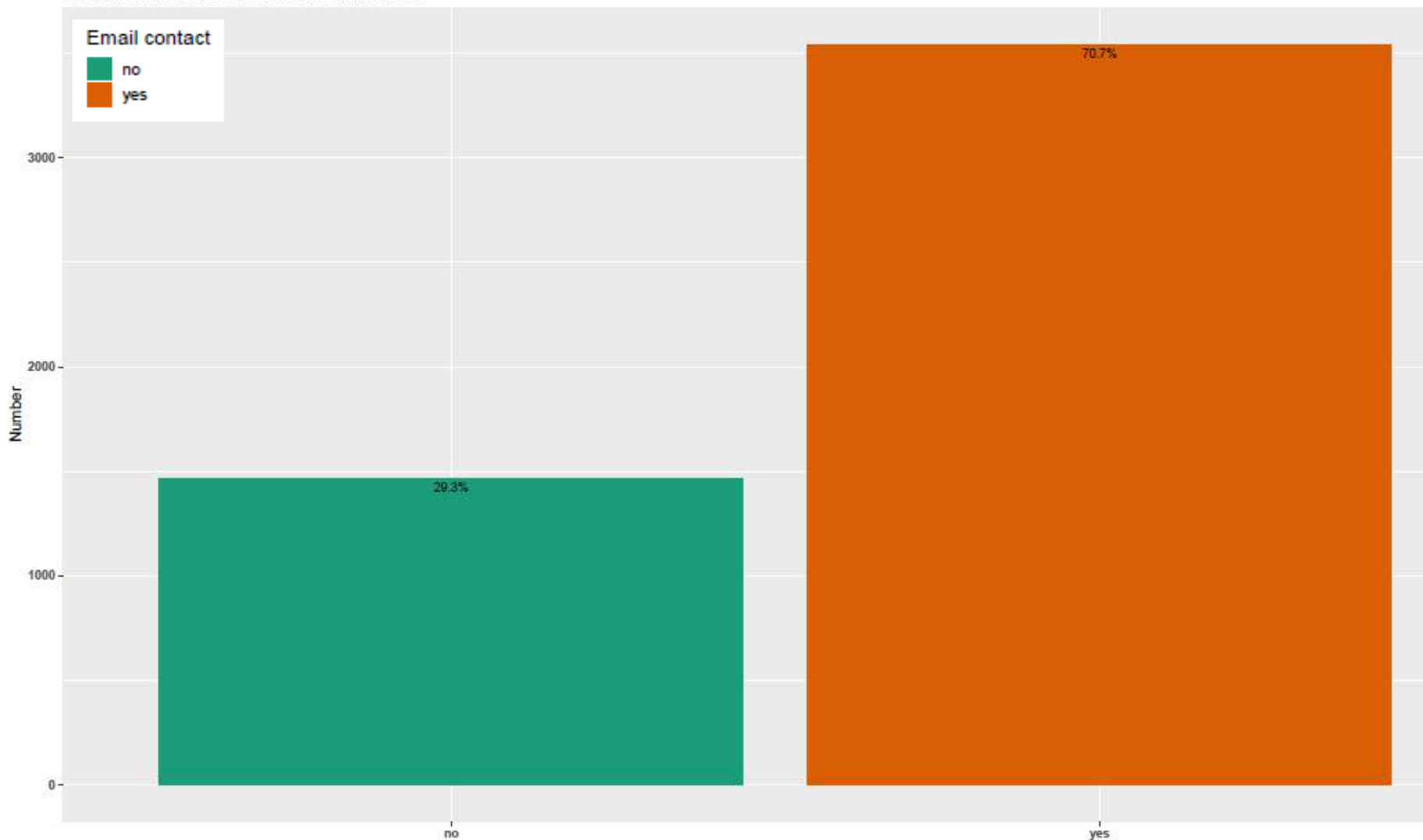
Proportion of Consent to E-Mail Contact

Consent for email contact out of all participants agreeing for recontact



Future Contact Via E-Mail

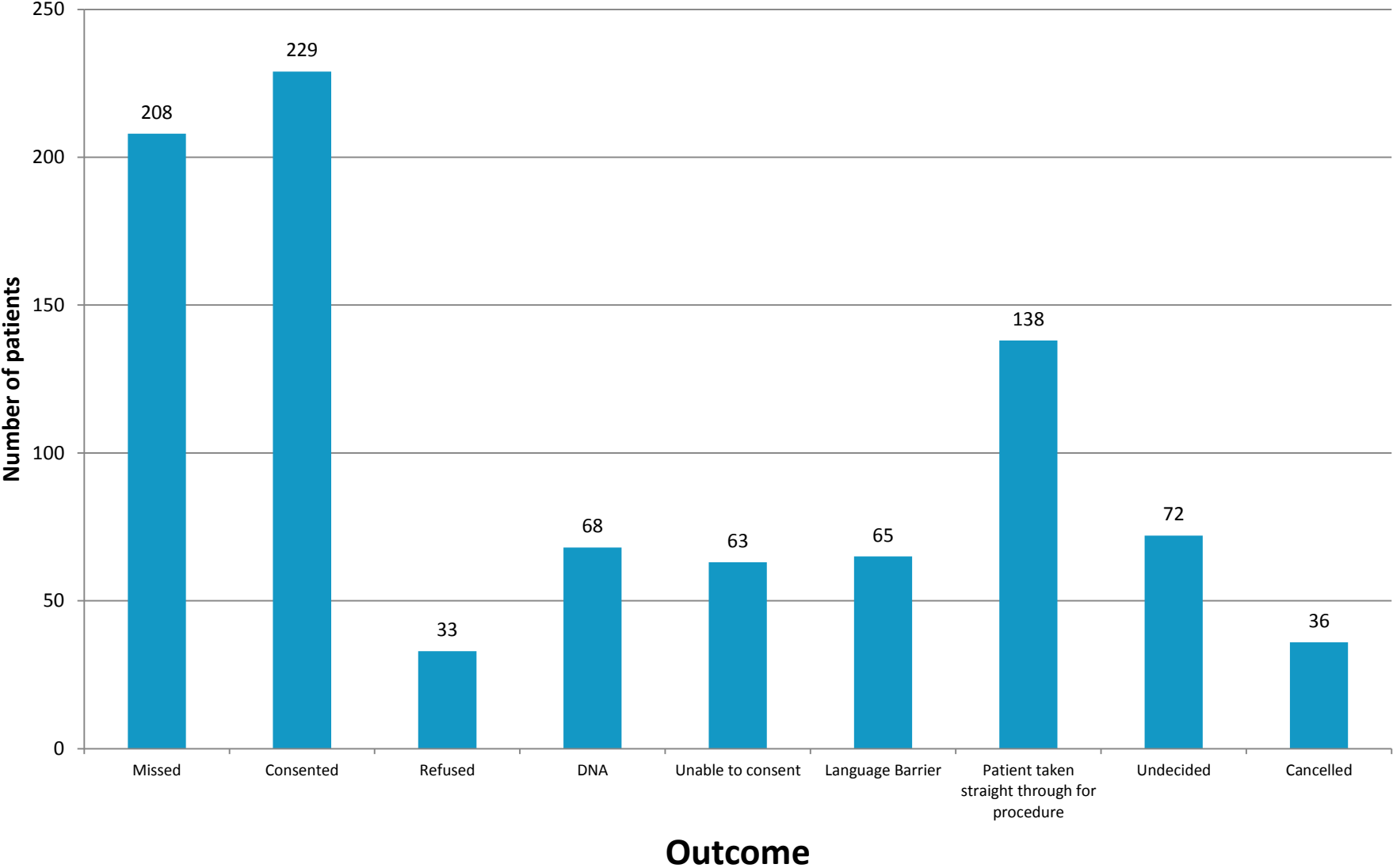
Overall consent for email contact numbers



Proportion of Cardiac Imaging Patients Recruited



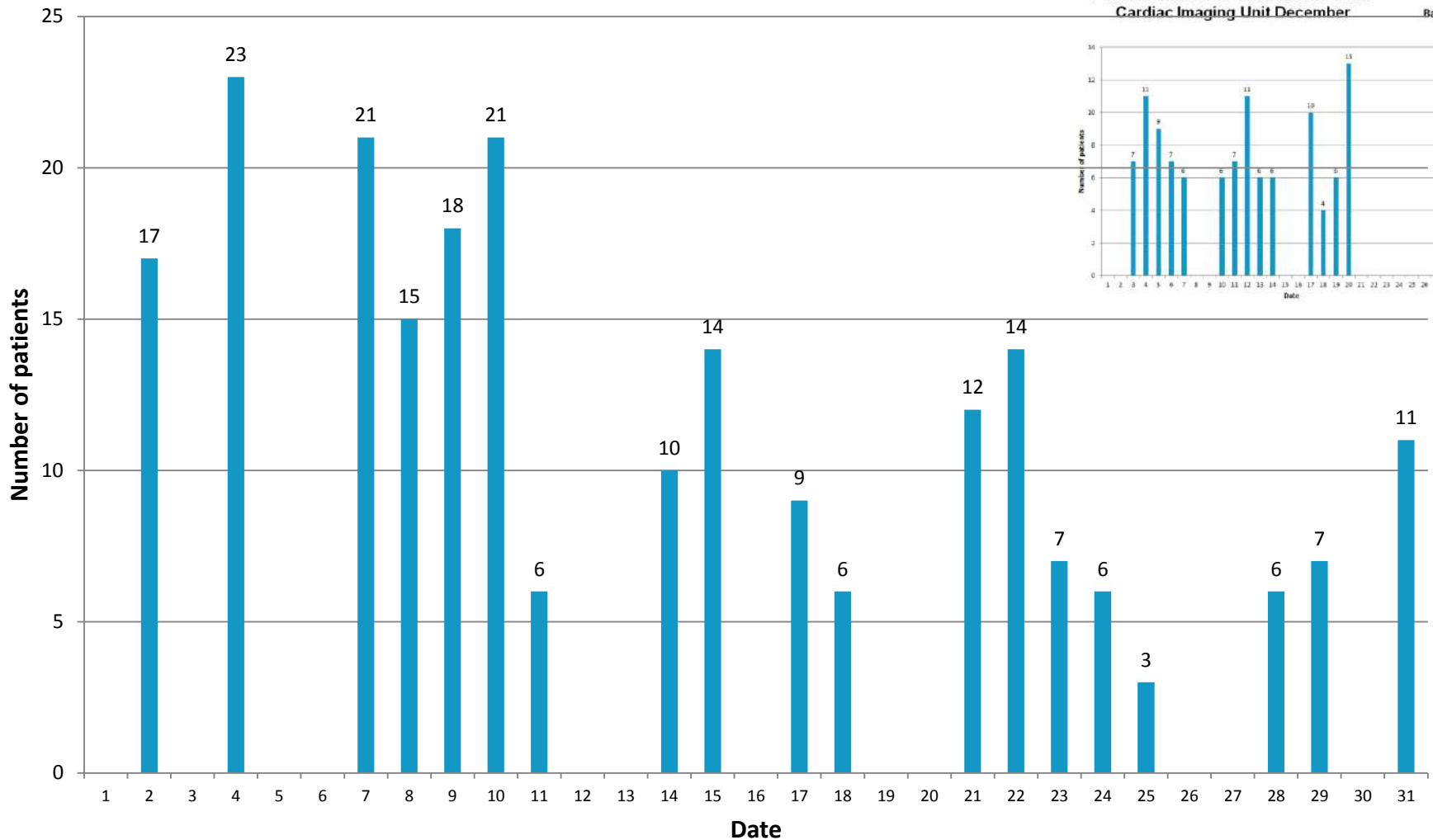
Barts Health
NHS Trust



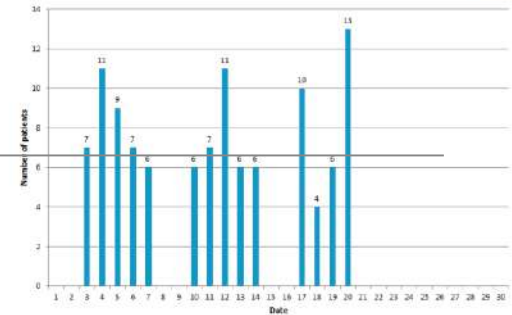
Patients Missed as Out of Hours in the Cardiac Imaging Unit January



Barts Health
NHS Trust



Patients Missed as Out of Hours in the Cardiac Imaging Unit December

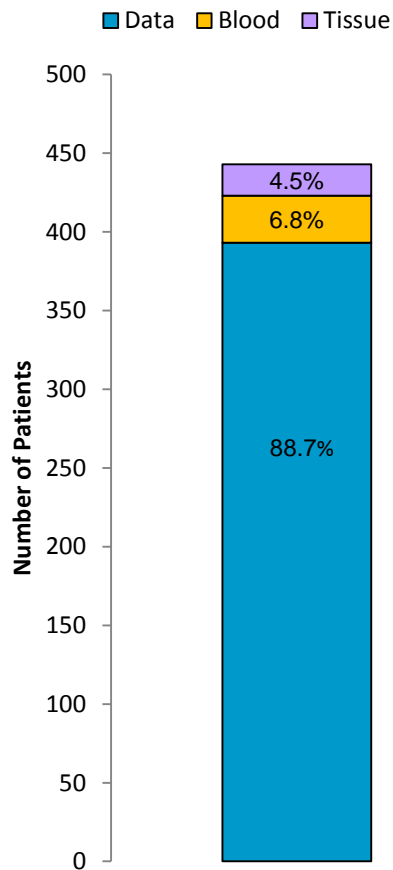


Ratio of Data, Blood and Tissue for three consecutive months

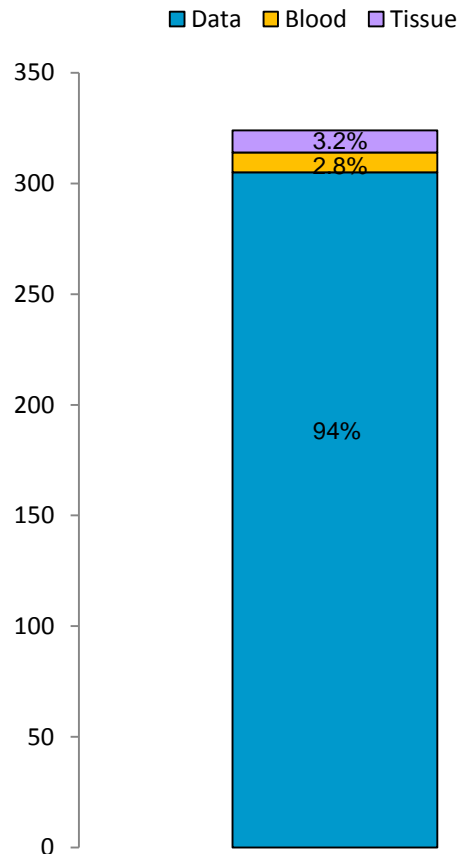


Barts Health
NHS Trust

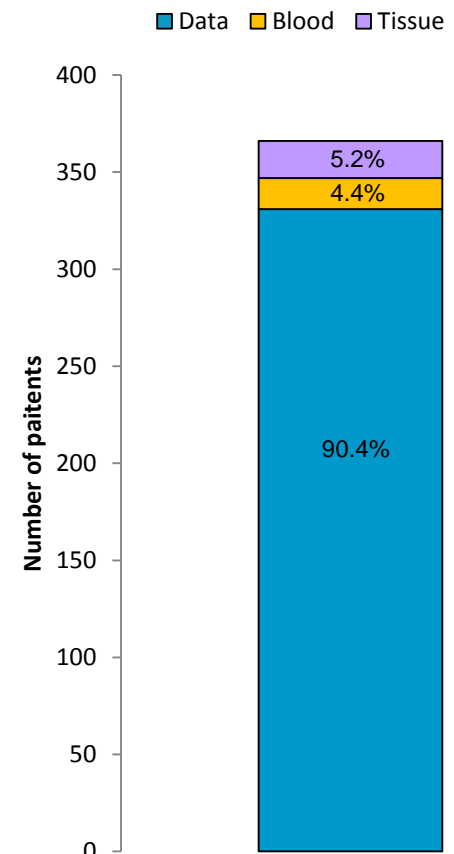
November 2018



December 2018



January 2019



Overall Ratio of Data, Blood and Tissue

